

## ECO-DRIVE S 8 **Screwed-in fastener with metal pin and telescopic design support washer**



### Description

Innovative fastener for fastening of polystyrene in all substrates

Type of insulation material with which the fastener is to be used



Polystyrene foam EPS

ETAG 014 use cat.

A	B	C	D	E
Concrete	Solid clay bricks, Calcium silicate bricks	Porous blocks	Elements on LAC lightweight aggregate	Aerated concrete

### Features and advantages of the product



#### Screw-in fixing, TX-40

Screw-driven fastener recommended for use in brittle materials to avoid damaging of the substrate with a hammer. Screw-driven nail guarantees achieving best strength parameters and facilitates flush fitting of the fastener with the insulation material. These fasteners are real time-savers



#### Modern telescopic design

Combination of telescopic design and a cutting washer offers a most advanced fastener on the market for covered up installation spot which eliminates the use of cutter and reduces pollution with polystyrene dust



#### Polystyrene disc

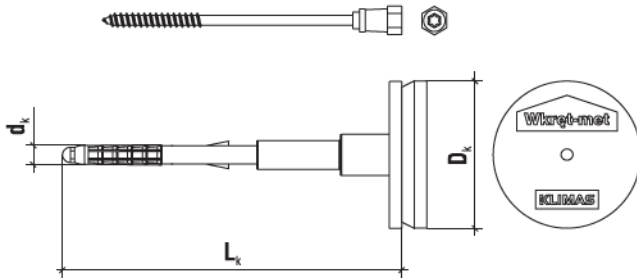
Fasteners are supplied with polystyrene discs, which seriously shortens installation work, eliminates thermal bridging and ensures good aesthetics of the outer layer



#### Pre-assembled fasteners

Screw-in parameters and provides for flush fitting of the fastener with the insulation material. These fasteners are real time-savers

### ECO-DRIVE S 8 **Screwed-in fastener with metal pin and telescopic design support washer**



Product marking

<b>ECODRIVE S</b>	<b>08</b>	<b>150</b>	<b>(100)</b>
Fastener type	Diameter	Length	Number of pieces in a box

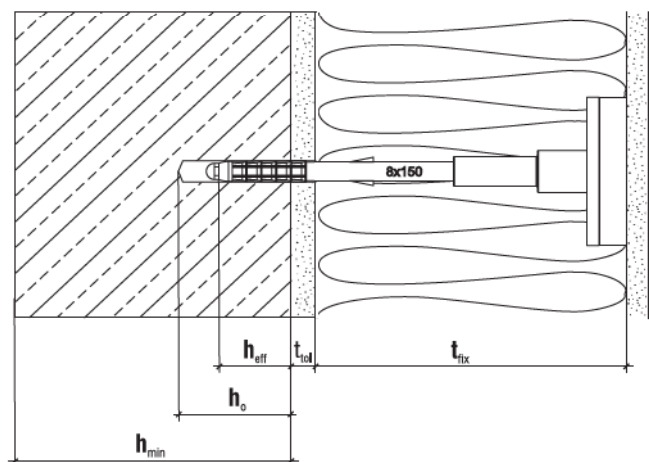
#### PRODUCT RANGE

	Code	$d_k \times L_k$ [mm]	Insulation material thickness $t_{ix}$ [mm]			Pcs.
			New buildings		Old buildings	
			$t_{tot}$ adhesive layer of 10 mm		$t_{tot}$ adhesive layer of 10 mm + 20 mm of old plaster	
			Cat. A B C D	Cat. E	Cat. A B C D	
<b>Ø8</b>	ECODRIVE-S-08150(100)	8x150	80	—	—	100
	ECODRIVE-S-08170(100)	8x170	100	80	80	100
	ECODRIVE-S-08190(100)	8x190	120	100	100	100
	ECODRIVE-S-08210(100)	8x210	140	120	120	100
	ECODRIVE-S-08230(100)	8x230	160	140	140	100
	ECODRIVE-S-08250(100)	8x250	180	160	160	100
	ECODRIVE-S-08270(100)	8x270	200	180	180	100
	ECODRIVE-S-08290(100)	8x290	220	200	200	100
	ECODRIVE-S-08310(100)	8x310	240	220	220	100
	ECODRIVE-S-08330(100)	8x330	260	240	240	100
	ECODRIVE-S-08350(100)	8x350	280	260	260	100
	ECODRIVE-S-08370(100)	8x370	300	280	280	100
	ECODRIVE-S-08390(100)	8x390	320	300	300	100
	ECODRIVE-S-08410(100)	8x410	340	320	320	100
	ECODRIVE-S-08430(100)	8x430	360	340	340	100

#### TECHNICAL DATA

Parameter	Unit	Value
Plug diameter	$d_k$ [mm]	8
Washer diameter	$D_k$ [mm]	60
Anchorage depth	$h_{eff}$ [mm]	35/55*
Drilled hole depth	$h_o$ [mm]	45/65*
Thermal conductivity	$\chi$ [W/K]	0.002
Washer stiffness	S [kN/mm]	0.60
Use categories	-	<b>A B C D E</b>
Plug material	-	PA
Pin material	-	Carbon steel, nylon + GF coated head
European Technical Approval	-	<b>ETA-13/0107</b>

\* - ETAG 014, use category E (aerated concrete)



## ECO-DRIVE S 8 Screwed-in fastener with metal pin and telescopic design support washer

### RESISTANCE

ETAG 014 use cat.	Substrate	Density [kg/dm <sup>3</sup> ]	Characteristic pull-out resistance
A	Concrete C12/15	≥ 1.80	1.20
A	Concrete >C16/20	≥ 2.30	1.50
B	Solid clay bricks	≥ 2.00	1.50
B	Calcium silica solid brick	≥ 2.00	1.50
C	Calcium silicate hollow blocks	≥ 1.60	1.50
C	Perforated solid brick	≥ 1.20	1.50
C	Lightweight concrete hollow block HBL	≥ 0.80	1.50
D	Lightweight concrete blocks LAC	≥ 1.05	0.90
E	Autoclaved aerate concrete AAC2	≥ 0.35	0.60
E	Autoclaved aerate concrete AAC7	≥ 0.65	1.20

Partial safety factor for anchor resistance  $\gamma_m=2$  (valid in absence of national regulations)

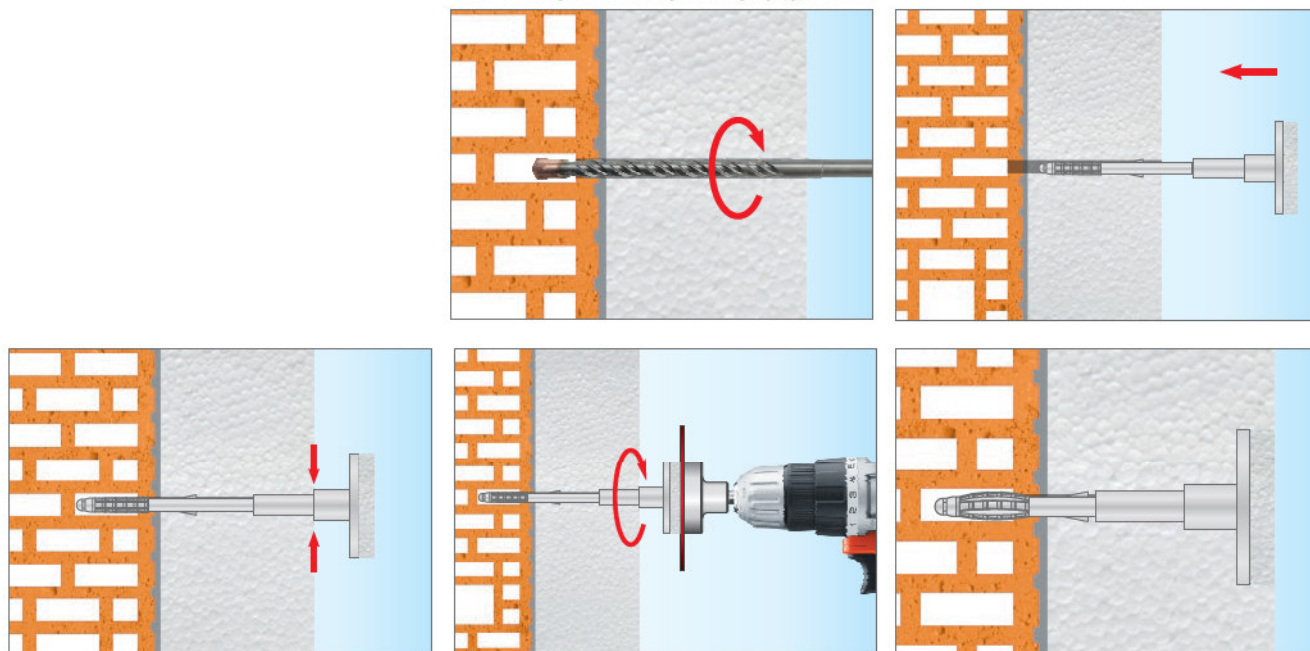
### INSTALLATION DATA

Fastener type	ECO-DRIVE S 8
Min. base material thickness $h_{min}$ [mm]	100
Minimum anchor spacing $L_{cs}$ [mm]	100
Minimum edge distance $C_{min}$ [mm]	100

### ECO-DRIVE S 8 PULL-TROUGH TEST INSULATION SAMPLE [kN]

R panel	EPS 035/80 mm	EPS 040/80 mm
	0.54 [kN]	0.49 [kN]

Installation spot covered up with a polystyrene disc



## INSTALLATION ACCESSORIES

**Setting tool** (for ECO-DRIVE 8)

**EDST**

diameter  $\varnothing$  120 mm, TX 40

Specifications:

- ECO-DRIVE 8, ECO-DRIVE S 8 and Drive S setting tool - see Table no. 3 page 22



[wkręt-met.com/eco-drive\\_pl](http://wkręt-met.com/eco-drive_pl)

