



TECHNICAL DATA SHEET

TOPECA, Lda
Rua D. Nuno Alvares Pereira, 53
2490-114 Cercal – Ourém
PORTUGAL

Tel: 00 351 – 249 580 070
Fax: 00 351 – 249 580 079

TOPECA
FÁBRICA DE PRODUTOS PARA CONSTRUÇÃO

geral@topeca.pt
www.topeca.pt

rebetop

ecolight

mortars for coatings

light render, ecological and thermal



use

Rebetop Ecolight is a light and thermal mortar, formulated with cork aggregates for regularization and protection of walls and ceilings in interior and exterior. Designed for use in large areas, given its high productivity.

A coated Rebetop Ecolight system gives constructive solutions with significant improvements from the point of view of thermal and acoustic behavior compared with traditional systems coated with plaster.

Rebetop Ecolight is an ideal mortar for use in sustainable and ecological construction, to be applied in new construction and rehabilitation.

It allows the mechanical or manual projection.

Durable and recyclable product.

Good adhesion to the substrate.

surface

- Brickwork;
- Stone walls
- Blocks;
- Concrete;
- Old render
- Splash mortar
- Traditional old cement coatings.



CE marking

LW T2-CS II W2
European standards
EN 998-1

rebetop ecolight

light render, ecological and thermal

mortars for coatings

recommendations

On edges, and corners of the posts will recommends the use of suitable profiles. Do not apply in wet weather or at risk of freezing, in the hours after application. Do not use on water saturated supports.

Comply with the support of the expansion joints, these should be extended to the plaster.

With hot / dry weather or supports to the direct action of the sun should follow the following indications: wet the substrate, wait for the water film disappears before starting the projection; proceed to the irrigation surfaces executed at 24 and 48 hours after application.

On supports made of materials of different natures and thus with different coefficients of expansion (eg - Concrete -Masonry) must apply fiber glass in the center of thickness of the plaster, thereby improving the mechanical resistance of the coating.

Strengthening the plaster with fiber glass in areas of tension, such as boxes, shutters, will vertices, corners, etc.. The fiber glass should be incorporated into the center of the thickness of the render.

Respecting the amount of water each mixture.

Can be applied in multiple layers and at the end at least a thickness of 15 to 20mm

When it is necessary to apply a 2nd layer should do it soon after the end of the prey of the 1st layer, this should present themselves at a young age.

To ensure homogeneity of the product, the dosing of water and mixing time should be constant.

Do not add any other products to plaster.

Before starting the projection is important to check the points below, to avoid problems of lack of adherence to the support of the Rebetop Ecolight:

–The state of the mouthpiece, checking whether this has a diameter suitable for spraying, ie, if it is worn.

–Adjusting the air gun design (the distance between the air nozzle and mouthpiece to be substantially equal to the diameter of the nozzle).

During application of the Rebetop Ecolight should ensure adequate and constant, pressure, distance and angle of incidence of the jet projected so as to promote:

–Adhesion to the substrate Rebetop Ecolight;

–Uniform coverage of the coating;

Protecting the upper edges of the lining of penetration of rainwater, using protective caps.

In hot weather should put cloths or tarps to protect the surface.

In areas of contact with the soil previously recommends the sealing surfaces in order to prevent degradation of the coating.

composition and characteristics

Composition:

Cement, calcium hydroxide, silica compounds, cork regranulate, specific adjuvants and hydrophobic agents.

Characteristics:

Layer thickness: 15-20 mm.

Application temperature (ambient and Support): 5 ° C to 30 ° C.

Cure Time: 28 days

Pulp density: 1000 kg/m³

Density of hardened product: 800 kg/m³

Flexural strength: 0,8 N/mm²

Compressive strength: Classe CSII

Capillary: Classe W2

Adherence (concrete): 0.3 N/mm² - FP: B

Coef. Diffusion of Water Vapor (μ): 12.2

Thermal conductivity: λ (λ10, dry) = Classe T2

Permeability: μ 9

Note: the results corresponding values obtained in laboratory conditions in accordance with EN 998-1, under standard conditions may vary with the reduction or increase of temperature and type of support.

colour

Grey

consumption

6,5 kg /m².cm

available in

Sacks of 15 kg

Pallets with 48 Sacks.

storage

1 year from date of manufacture in a sealed packet stored in a damp free environment.



rebetop ecolight

light render, ecological and thermal

mortars for coatings

preparation of surface

Surfaces must be dry, clean (free of release oils, grease, dust, efflorescences or loose materials), solid and flat.

Eliminate high spots and fill any cracks before applying Rebetop Ecolight.

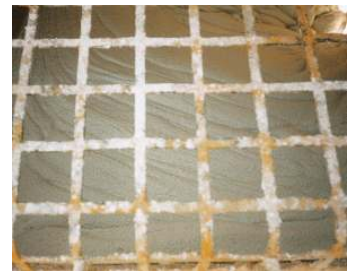
On smooth concrete apply Rebetop Chapisco or Topfix, pre-diluted (2 Topfix: 1 water).

In hot weather, wind and absorbent substrates, previously wet the supports and wait for the film water disappears.



application

Mix Rebetop Ecolight, preferably using a mechanical mixer, with approximately 9,5 litres of clean water per bag until a consistent even paste is formed.



Apply Rebetop Ecolight in a single coat, working from bottom to top on the surface. Thickness per layer: 15 - 20mm.

Should the levelling of walls require greater thickness, further layers should be applied allowing the previous layer to dry first.

The lower surface of each underlying layer should be left rough.



After projecting the paste, smooth out with a cement edger so as to obtain a level surface.



When the paste has hardened sufficiently, the respective finish can be applied.

Cut the surface with a rectangular cement edger or ribbed edger.

After scraping, slightly smooth the surface with a trowel, to penetrate the particles in the render.

After hardening of Rebetop Ecolight, apply Tuforte Arear regularization product for subsequent application of paint.



rebetop ecolight
light render, ecological and thermal

mortars for coatings

possible coverings

Tuforte Arear

associated products

Topfix - Primary

Rebetop Chapisco – Splash mortar.

Tuforte Arear – Mortar finish sanded

